

# **80mm Thermal Receipt Printer**

**Operation Manual for Changing Parameters via Browser**

## 1. Overview

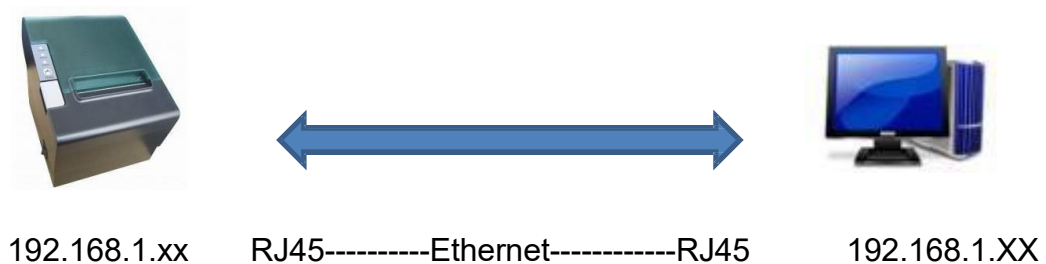
Welcome to use 80 Series Thermal Printer. You can update the Ethernet port parameters with the Windows application software provided by us or a browser (such as IE/Firefox).

## 2. Obtain the printer IP address

Connect the printer to the power adapter. Press Feed button and then turn on the printer; wait for 1-2 seconds for the printer to automatically print the self-test page. Find the IP address in the self-test page, which is 192.168.1.87 by default.

## 3. Connect the printer

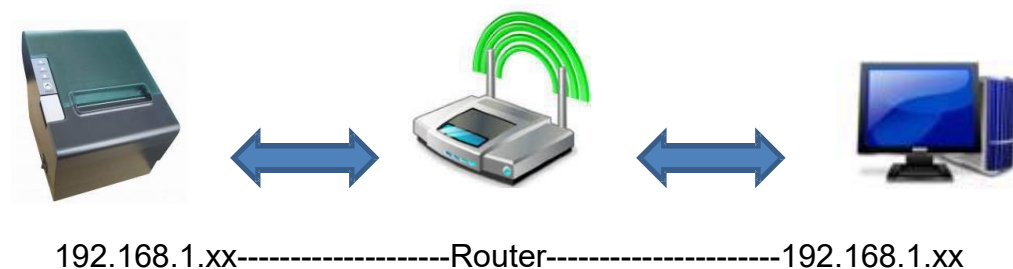
### 3.1 Direct connection with network cable



Printer and PC shall use the IP Address of the same network segment, for example 192.168.1.xx

For example, printer: 192.168.1.87, PC: 192.168.1.87

### 3.2 Connect through a network device



Printer and PC shall use the IP Address of the same network segment, for example 192.168.1.xx

For example, printer: 192.168.1.87, Router: 192.168.1.1, PC: 192.168.1.87

## 4. Change parameters

### 4.1 Set pages

Open a browser, for example Microsoft IE, enter the printer IP address, as shown in Figure 1, and then press Enter.

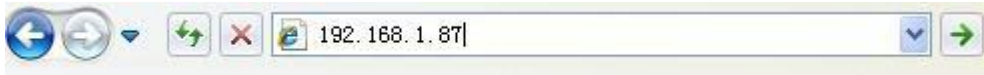


Figure 1

### 4.2 View interface information

After entering the web page, you will first see the printer interface information, as shown in Figure 2.

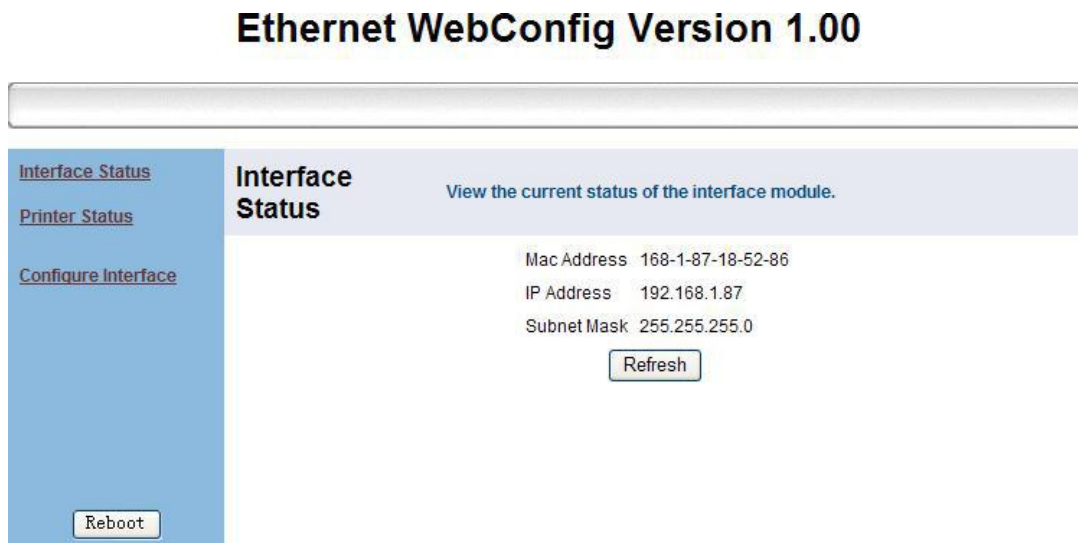


Figure 2

## 5. View the current status of the printer

Click the link "Printer Status" on the left to view the printer status:

**5.1 Whether the upper cover is open.**

**5.2 Whether there is diffusion knife error.**

**5.3 Whether the printing paper runs out.**

**5.4 Whether the printing paper is about to run out.**

**5.5 Whether the printer is offline, as shown in Figure. 3.**

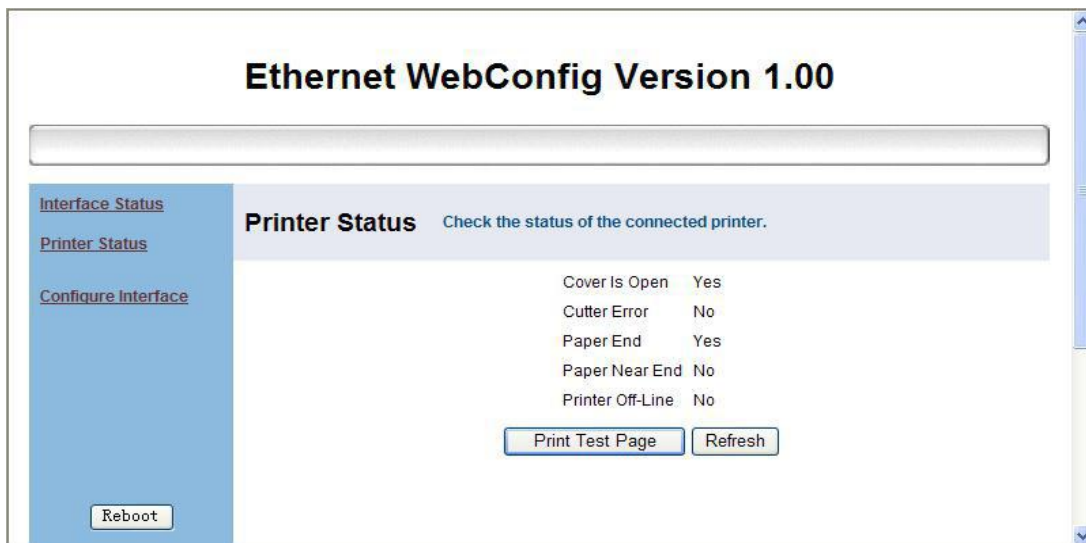


Figure3

- a、 Click "Print Test Page" to print a self-test page.
- b、 Click "Refresh" to refresh the page and view the latest status.

## 6. Set Ethernet port parameters

Click "Configure Interface" to enter the Ethernet port parameters setting interface, as shown in Figure 4.

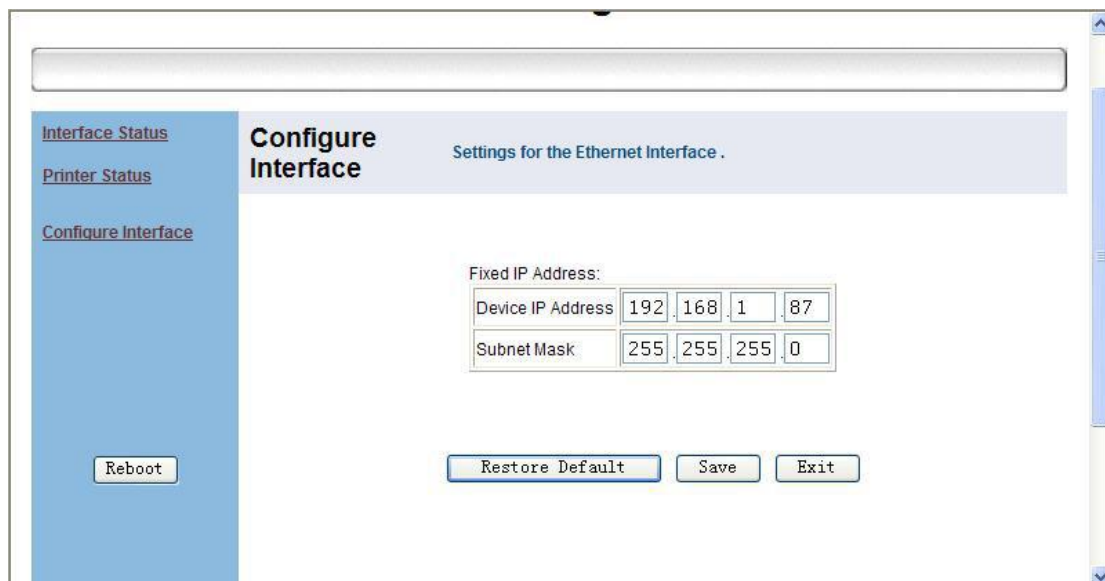


Figure 4

Fill in the new parameters, as shown in Fig. 5, new IP:192.168.1.86, then click "Save".

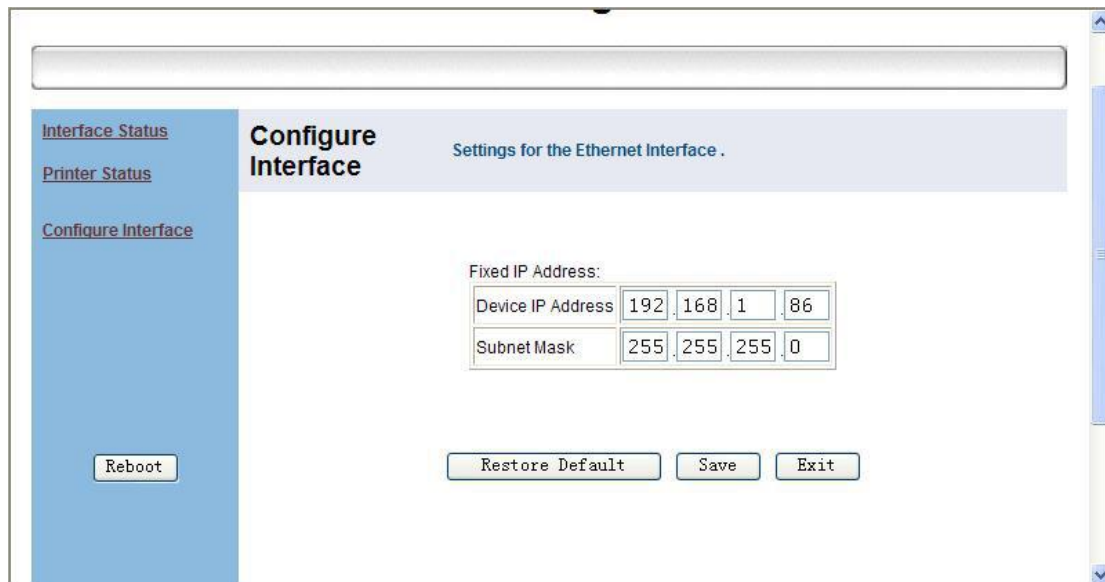


Figure5

A dialog box appears, as shown in Figure. 6, select "OK".



Figure 6

Then click the Reboot button on the left to restart the printer. A dialog box will appear, select "OK", as shown in Figure. 7.

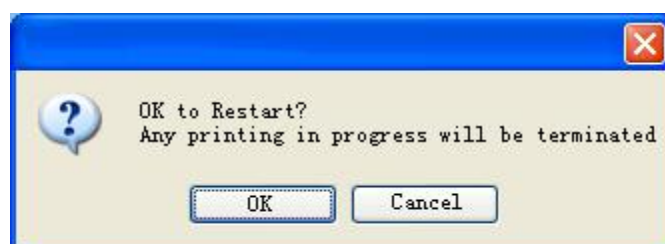


Figure 7

After clicking "OK", the interface appears as shown in Figure 8.

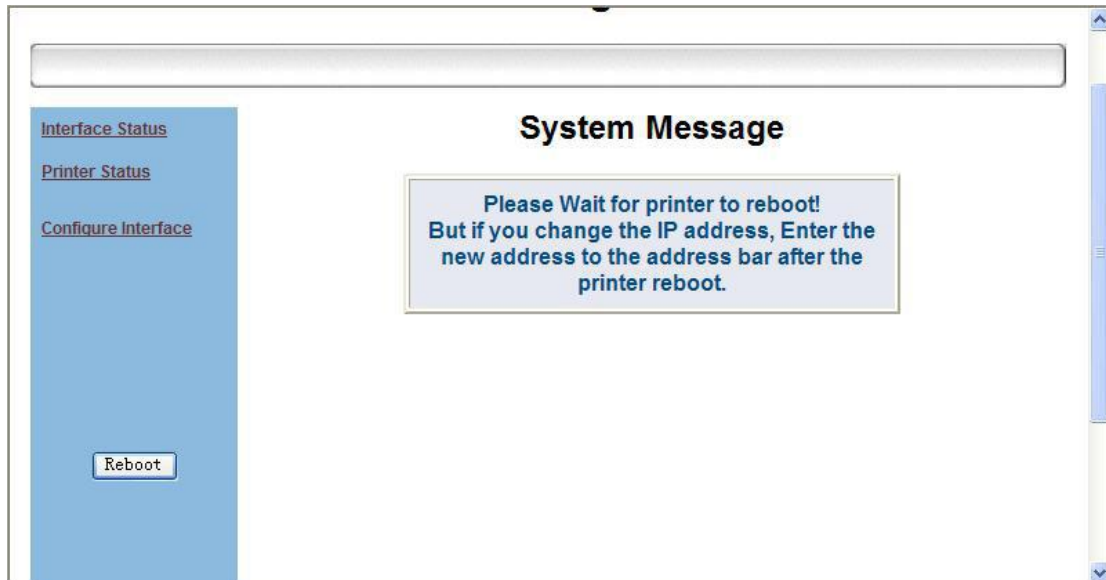


Figure 8

Wait for a few seconds, and upon hearing a “beep” sound, the restart is completed. The Ethernet port parameters have been modified.

To continue modification, enter the latest IP in the browser and repeat the above steps, as shown in Figure. 9

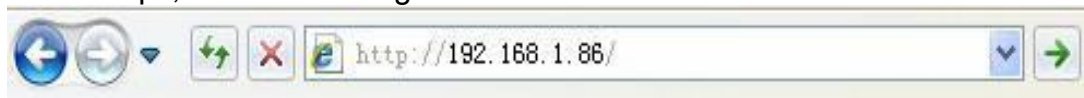


Figure 9